



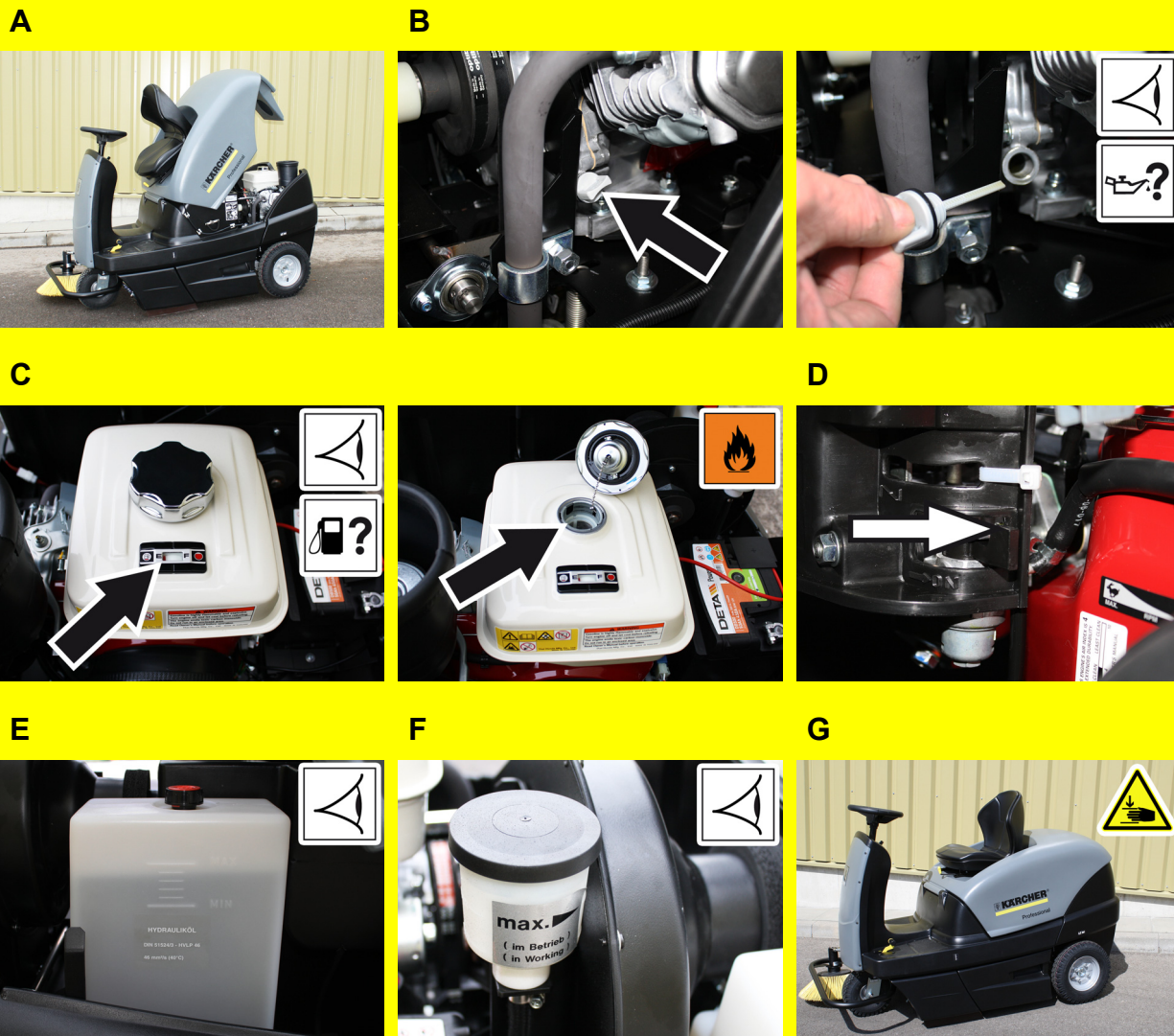
Warning

These are only brief instructions! Please read and comply with these instructions prior to using or servicing your appliance.

The non-compliance of the operating and safety instructions may lead to damages of the appliance and to dangers for the operator and other persons.

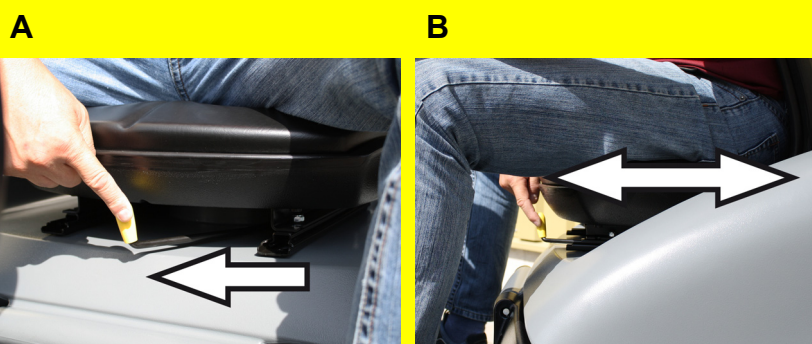
Start up

1



- A Opening and securing cover
- B Check oil level
- C Check fuel level via the tank indicator. Use "regular unleaded petrol".
- D Open the fuel supply.
- E Check oil level in the equalisation container.
- F Check the hydraulic oil level on the storage container.
- G Close cover.

2

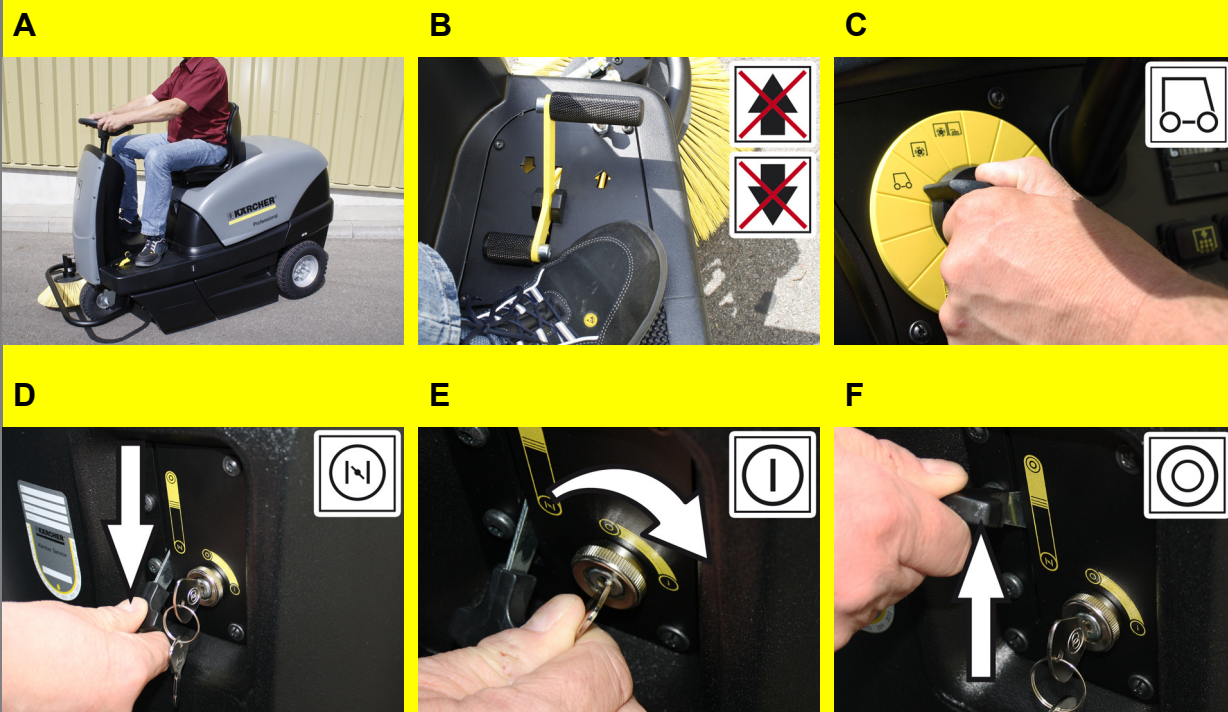


Ajdst the seat

- A Pull seat adjustment lever inwards.
- B Slide seat, release lever and lock in place. Check that the seat is properly locked in position by attempting to move it backwards and forwards.

Operation

1



Starting the machine

- A Sit on the driver's seat.
- B Do NOT press the accelerator pedal.
- C Set programme switch to step 1 (driving).
- D If the motor is cold, press the choke lever down.
- E Turn the ignition key to position "I".
If the machine starts, release the ignition key.
- F Once the engine is running, pull choke lever back up.

2



Drive the machine

- A Press slowly the accelerator pedal "forward".
- B Press slowly the accelerator pedal "reverse".
- C Release the accelerator pedal, the machine brakes automatically and stops.

3



Sweeping with sweep roller

- A Set programme switch to step 2.
Roller brush is lowered.

4



Sweeping with side brushes

- A Set programme switch to step 3.
Side brushes and roller brush are lowered.

5



Sweeping with bulk waste flap raised

- A Press the pedal for the bulk waste flap forwards and keep pressed down.
To lower it, take foot off pedal.

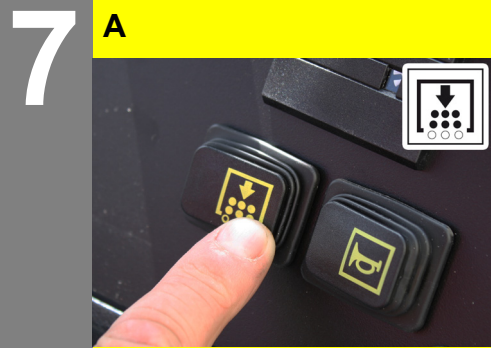
6



Sweeping damp or wet floors

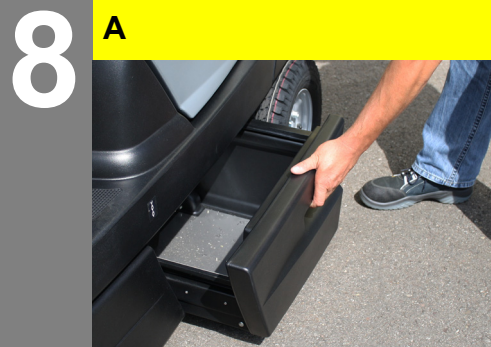
- A Open wet/dry flap.

Operation



Cleaning the dust filter

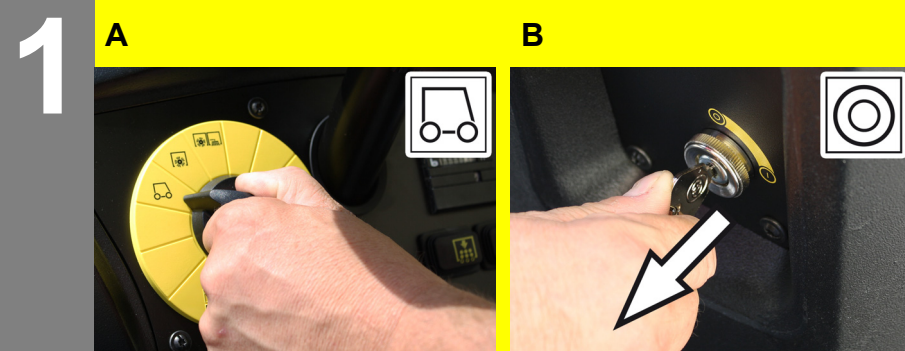
A During operations, the dust filter should be shaken and cleaned every 15-30 minutes depending on the amount of collected dust.



Emptying waste container

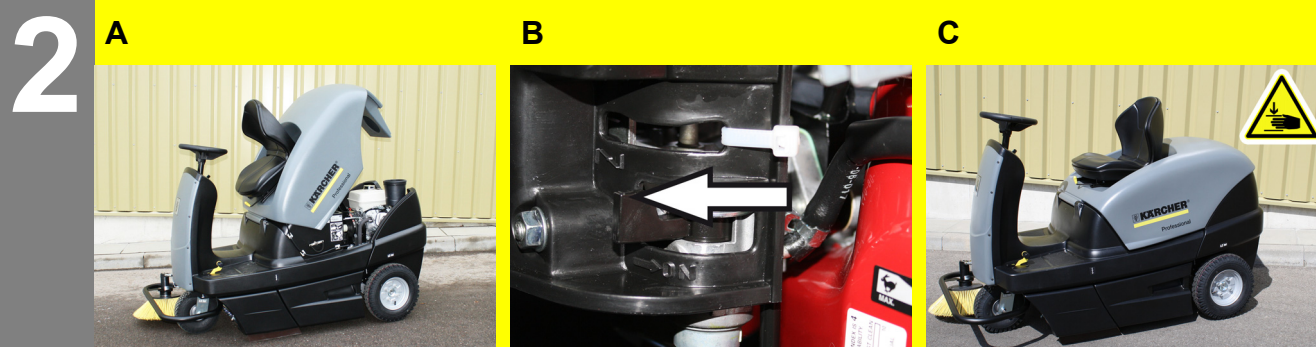
A Raise the waste container slightly and pull it out.
Empty waste container.
Push in the waste container and lock it.
Empty opposite waste container.

Finish operation



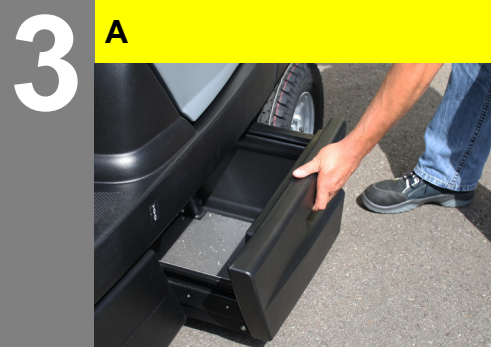
Turn off the appliance

A Set programme switch to step 1 (driving).
The side brush and roller brush are raised.
B Turn ignition key to "0" and remove it.



Close fuel cock

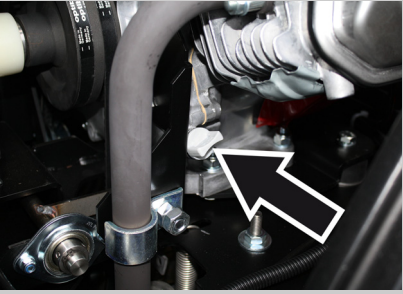
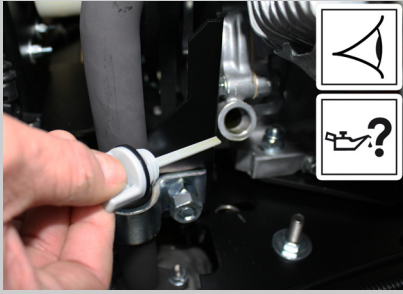

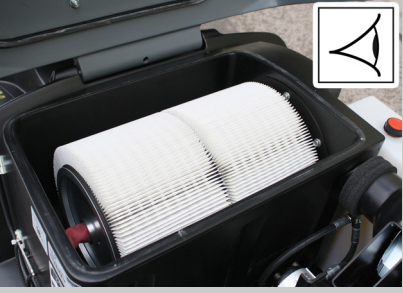

A Open the device hood.
B Close the fuel supply.
C Close cover.



Emptying waste container

A Raise the waste container slightly and pull it out.
Empty waste container.
Push in the waste container and lock it.
Empty opposite waste container.

Maintenance and care

		daily	weekly	Kärcher Customer Service
1	<p>A</p>  			
2	<p>A</p> 			
3	<p>A</p> 			
4	<p>A</p> 			

A Check engine oil level.

A Check air filter.

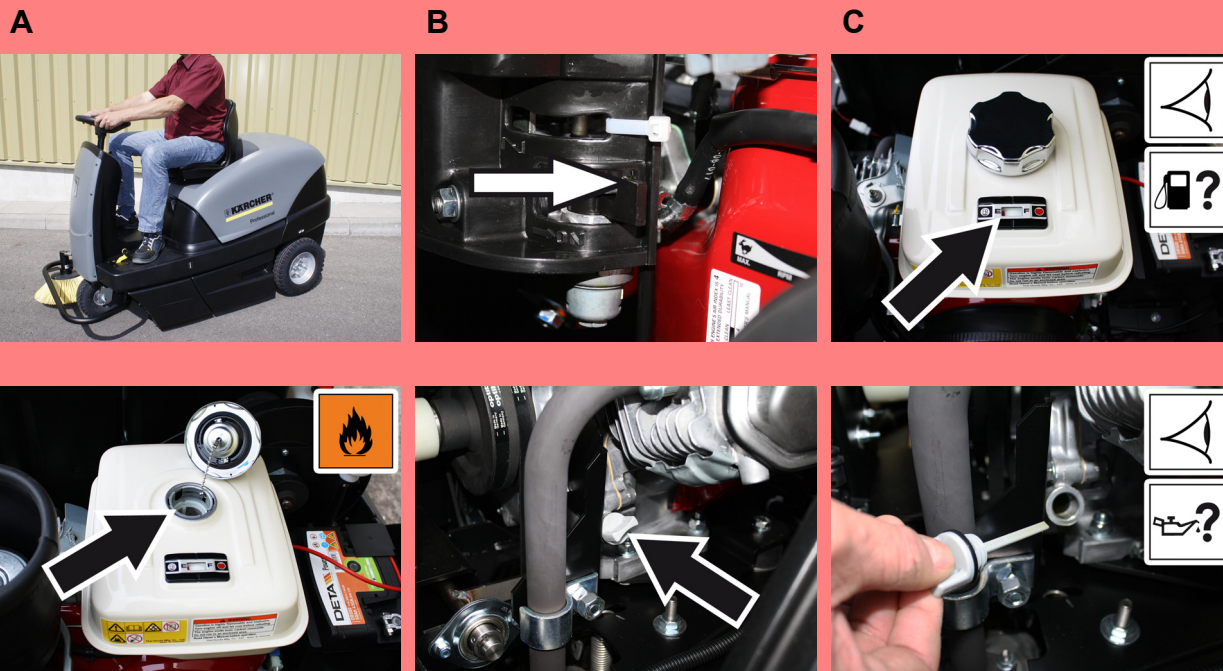
A Check dust filter and clean filter box, if required.

A Clean the machine with a damp cloth which has been soaked in mild detergent.

⚠ **Warning**
Risk of damage! Do not wash down the appliance with water and do not use aggressive detergents.

Troubleshooting

1



Appliance cannot be started

- A Sit on the driver seat, the seat contact switch gets activated
- B Open fuel cock
- C Check tank contents and oil level; refill oil and fuel.

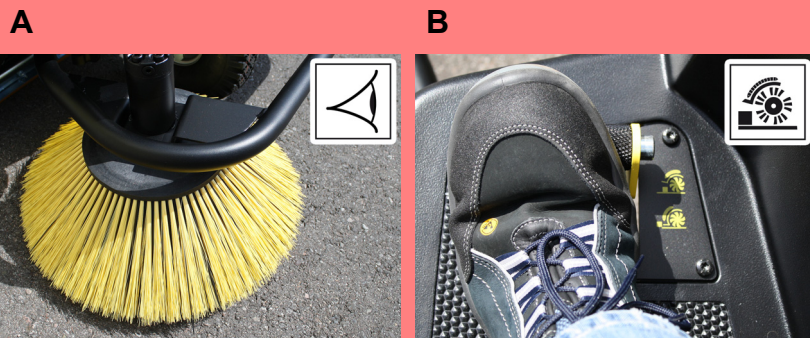
2



Engine is running but machine is not moving

- A Check setting of freewheel lever

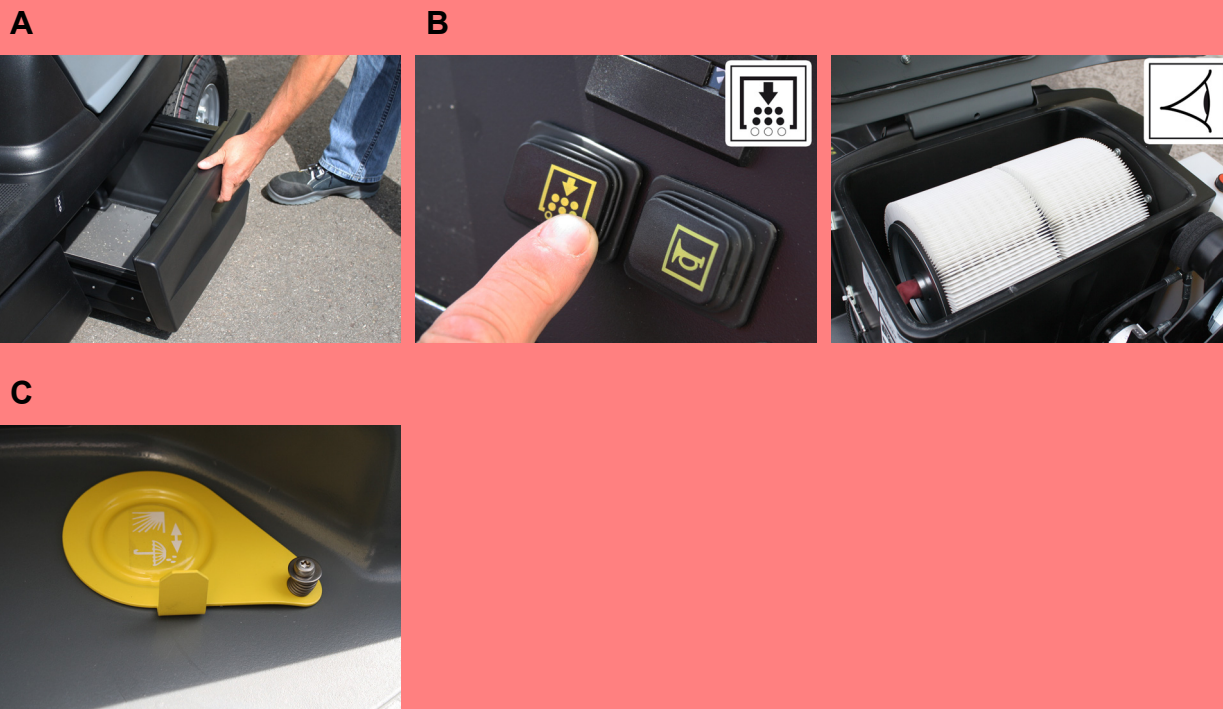
3



Machine is not sweeping properly

- A Check roller brush and side brushes for wear, replace if necessary.
- B Check function of bulk waste flap

4



Dust gathers in the machine

- A Empty waste container
 - B Check dust filter, clean or replace
 - C Close wet/dry flap
- Roller brush does not turn.
- A Remove belts or cords from roller brush